

Valid as per October 2012

# SCHWEIZER Products for Improved Vision





The SCHWEIZER home in Forchheim/Germany with a production area of 5500 m<sup>2</sup>

The family company SCHWEIZER was founded already in the year 1840 in Germany. SCHWEIZER developed from a glass grinding company and the manufacturing of optical goods into a leading supplier of product solutions for improved vision.

Since 1945 until today SCHWEIZER produces magnifiers in Germany. The offered range is continuously expanded by new and innovative products.

Experience, competence, customer satisfaction and not at last the full dedication of the staff has made SCHWEIZER to a leading specialist for improved vision. For instance SCHWEIZER was the first company to introduce a modular magnifier system with interchangeable magnification heads to the world market. At the end of the nineties SCHWEIZER produced the world's first illuminated magnifier with LED light.

# Contents

## Information

about our latest product news and innovations can be found at [www.improvision-lvs.com](http://www.improvision-lvs.com)

Another world novelty was the development of a comprehensive ergonomic magnifier series for comfortable reading. Every time the user-friendly innovations are at the forefront of product solutions for improved vision.

The global export activities of SCHWEIZER in presently more than 40 countries are serviced by their sister company ImproVision. This name stands for Improved Vision. Highly specialized country distributors are identified, educated and supported permanently for the benefit of the local eye care professionals and their customers in a growing number of countries.

Magnifiers

4

Video magnifiers

26

Lamps

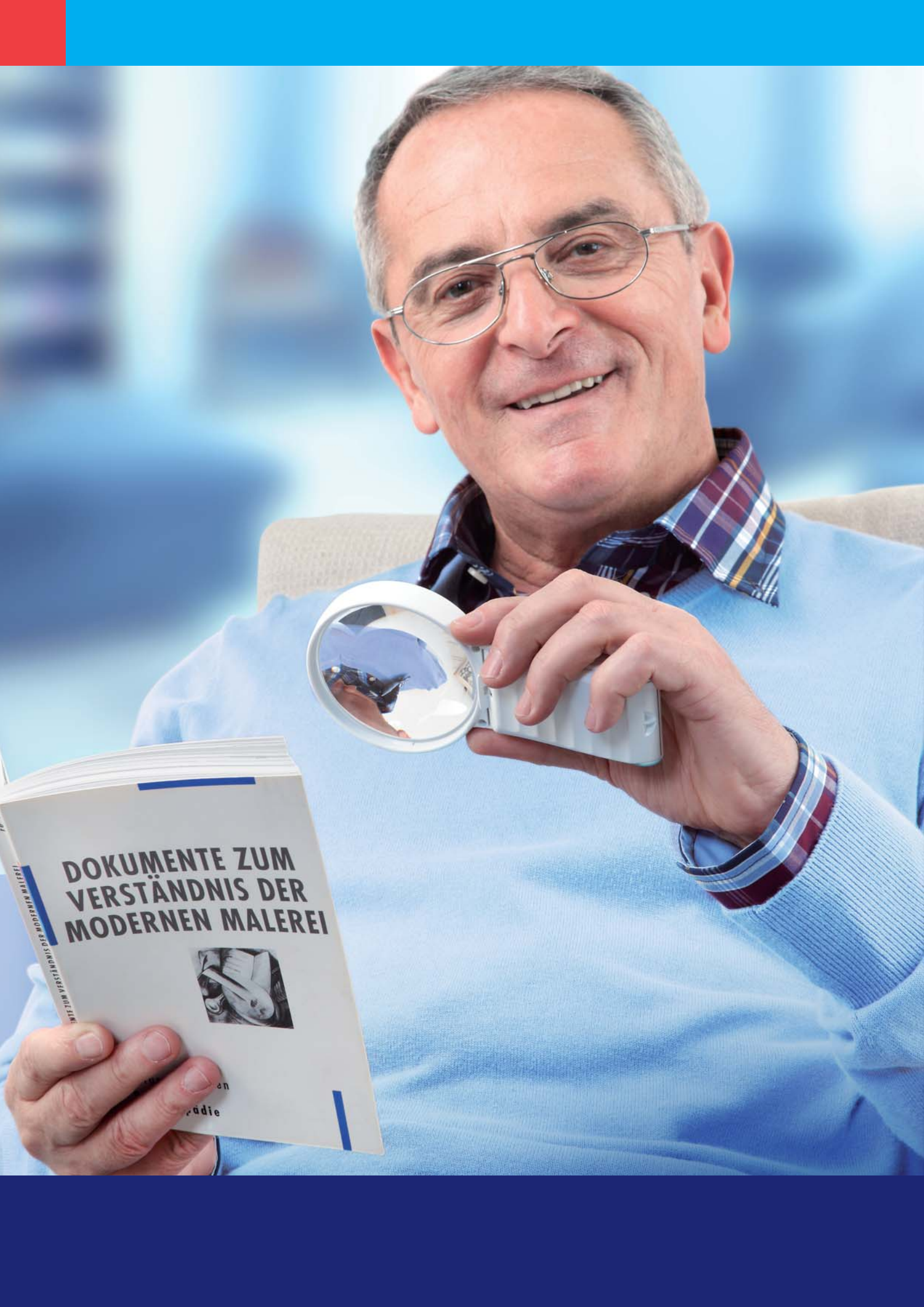
32

Telescopes

36

Aids

44



**DOKUMENTE ZUM  
VERSTÄNDNIS DER  
MODERNEN MALEREI**



MIT ZUM VERSTÄNDNIS DER MODERNEN MALEREI

an  
die

Magnifiers are the most common classic visual aids for improved vision.

They are used to enlarge the image of an object, for example for reading, in case of a reduced visual acuity or just for hobby and leisure in order to see details quite clearly.

Illuminated magnifiers combine such an enlarged image with the advantages of an optimized light. An individually tested light temperature is more comfortable and the reading is less stressful. Such a good and appropriate light results in a better visual acuity.

# Magnifiers



## Contents

<u>LED illuminated hand magnifiers</u>	p. 6
<u>LED illuminated stand magnifiers</u>	p. 9
<u>Displays</u>	p. 15
<u>Aspheric reading magnifiers</u>	p. 16
<u>Biconvex reading magnifiers</u>	p. 19
<u>Stand and needlework magnifiers</u>	p. 20
<u>Pocket magnifiers</u>	p. 22
<u>Special magnifiers</u>	p. 24

Light temperatures: **2700 K** **4500 K** **6000 K**

**132562** **134562** **136562**

56 D / Ø 35 mm (opt. Ø 27,0 mm)

**132482** **134482** **136482**

48 D / Ø 35 mm (opt. Ø 27,5 mm)

**132392** **134392** **136392**

39 D / Ø 35 mm

**132282** **134282** **136282**

28 D / Ø 35 mm



**132242** **134242** **136242**

24 D / Ø 55 mm (opt. Ø 52,5 mm)



**132202** **134202** **136202**

20 D / Ø 55 mm



**132162** **134162** **136162**

16 D / Ø 60 mm



**132122** **134122** **136122**

12 D / Ø 70 mm

# LED illuminated hand magnifiers

## ■ ÖKOLUX plus mobil



Battery operated illuminated hand magnifier with a 4 chip SMD LED available in 3 light temperatures.

- The choice of an individual preferred light temperature can reduce the magnification need
- Very bright, consistent and high-contrast light by the special light emitting diode
- Ideal illumination of the reading material or viewing object
- Low energy consumption and long battery lifetime – The change of the batteries is a child's play due to an easy closing mechanism in the handle
- Convenient integrated lanyard holder
- Microfiber pouch for protection and lens cleaning included
- Aspheric lightweight lens
- 3 AAA alkaline batteries required (not included)



### 134092 Box ÖKOLUX plus mobil 4500 K

Content: 28 D, 24 D, 20 D, 16 D, 12 D, 10 D, 10 D angled

**NEW!**



### 134042 Box ÖKOLUX plus mobil 4500 K

Content: 16 D, 12 D, 10 D, 10 D angled, 8 D, 6 D

Light temperatures: **2700 K** **4500 K** **6000 K**



**134052** Carton display 5 ÖKOLUX plus mobil 4500 K

Content: 12 D, 10 D, 10 D angled, 8 D, 6 D, ÖKOLUX plus mobil base, 20 consumer flyers



**134032** Carton display 3 ÖKOLUX plus mobil 4500 K

Content: 12 D, 8 D, 6 D, ÖKOLUX plus mobil base, 20 consumer flyers



**134082** Acrylic display ÖKOLUX plus mobil 4500 K

Content: 24 D, 20 D, 16 D, 2x12 D, 10 D, 10 D angled

**130082** Acrylic display ÖKOLUX plus mobil 3 light temp.

Content: 20 D in 3 light temp., 16 D in 4500 K, 10 D angled in 3 light temp.



**130012** Pack of 10 microfibre pouches

**180902** Pack of 5 lanyards

**156002** Pack of 3 AAA alkaline batteries



**132112** **134112** **136112**  
10 D / 75x50 mm



**132102** **134102** **136102**  
10 D / 75x50 mm, angled



**132802** **134802** **136802**  
8 D / Ø 85 mm



**132062** **134062** **136062**  
6 D / Ø 100 mm



**130092** ÖKOLUX plus mobil base

Writing and reading stand suitable for ÖKOLUX plus mobil



**174012** Arcadian blue

**174022** Caribbean blue

**174032** Bordeaux red

**174042** Kerry green

24 D / Ø 55 mm (opt. Ø 52,5 mm)



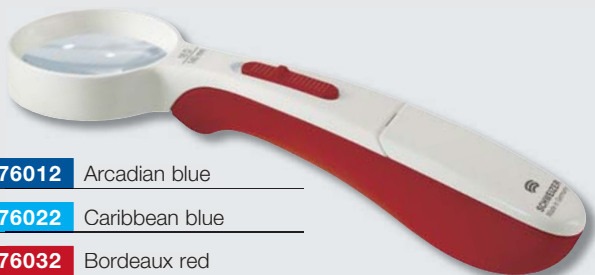
**175012** Arcadian blue

**175022** Caribbean blue

**175032** Bordeaux red

**175042** Kerry green

20 D / Ø 55 mm



**176012** Arcadian blue

**176022** Caribbean blue

**176032** Bordeaux red

**176042** Kerry green

16 D / Ø 60 mm



**177012** Arcadian blue

**177022** Caribbean blue

**177032** Bordeaux red

**177042** Kerry green

12 D / Ø 70 mm



**178012** Arcadian blue

**178022** Caribbean blue

**178032** Bordeaux red

**178042** Kerry green

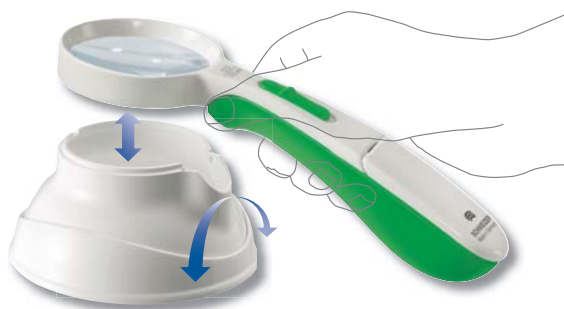
8 D / 100x75 mm

# LED illuminated hand magnifiers

## ■ ERGO-Lux

Battery operated illuminated hand magnifier in a revolutionary style with a 4 chip SMD LED.

- The ergonomic design supports the hand and the arm to ensure a natural and stress free position
- The correct distance between the object and the lens is found automatically when the handle end sits on the object
- Very bright, consistent and high-contrast light by the special light emitting diode
- Ideal illumination of the reading material or viewing object
- Low energy consumption and long battery lifetime – The change of the batteries is a child's play due to an easy closing mechanism in the handle
- Aspheric lightweight lens
- 3 AAA alkaline batteries required (not included)



For conversion into a stand magnifier please refer to the next page.

**156002** Pack of 3 AAA alkaline batteries



Box ERGO-Lux with all 5 magnification powers

**179012** Arcadian blue

**179022** Caribbean blue

**179032** Bordeaux red

**179042** Kerry green

**179052** Random mix of colours

**179932** Without content



# LED illuminated stand magnifiers

## ■ ERGO-Base & ERGO-Lux

The fixed-focus holder ERGO-Base converts the ERGO-Lux into the perfect illuminated stand magnifier.

- Connection by a patented magnetic mechanism which excludes any mechanical abrasion
- Easy scrolling on the object
- Stress-free reading inclination by tilting the fixed-focus holder towards the user
- The easy tilting mechanism guarantees a stable and firm hold by locking the reading inclination
- The easy tilting mechanism guarantees a stable and firm hold by locking the reading inclination
- Right-hand or left-hand use of all round lenses
- The light coloured material enhances the illumination of the ERGO-Lux
- For mobile use the magnifier is easily disconnected and separated



For details about ERGO-Lux hand magnifiers please refer to the previous page.



**179102** Box ERGO-Base with all 5 fixed-focus holders



ERGO-Lux

24 D

174012

174022

174032

174042

**174102** ERGO-Base for ERGO-Lux 24 D



ERGO-Lux

20 D

175012

175022

175032

175042

**175102** ERGO-Base for ERGO-Lux 20 D



ERGO-Lux

16 D

176012

176022

176032

176042

**176102** ERGO-Base for ERGO-Lux 16 D



ERGO-Lux

12 D

177012

177022

177032

177042

**177102** ERGO-Base for ERGO-Lux 12 D



ERGO-Lux

8 D

178012

178022

178032

178042

**178102** ERGO-Base for ERGO-Lux 8 D

Light temperatures: **2700 K** **4500 K** **6000 K**



**142562** **144562** **146562**

56 D / Ø 35 mm (opt. Ø 27,0 mm)

**142482** **144482** **146482**

48 D / Ø 35 mm (opt. Ø 27,5 mm)



**142392** **144392** **146392**

39 D / Ø 35 mm

**142282** **144282** **146282**

28 D / Ø 35 mm



**142242** **144242** **146242**

24 D / Ø 55 mm (opt. Ø 52,5 mm)



**142202** **144202** **146202**

20 D / Ø 55 mm



**142162** **144162** **146162**

16 D / Ø 60 mm



**142122** **144122** **146122**

12 D / Ø 70 mm



**142082** **144082** **146082**

8 D / 100x75 mm

# LED illuminated stand magnifiers

■ **ÖKOLUX plus**



Battery operated illuminated stand magnifier with a 4 chip SMD LED available in 3 light temperatures.

- The choice of an individual preferred light temperature can reduce the magnification need
- Adjustable reading inclination of 8 D magnification head for right-hand or left-hand use
- Very bright, consistent and high-contrast light by the special light emitting diode
- Ideal illumination of the reading material or viewing object enhanced by light-coloured material of the closed magnification head
- Low energy consumption and long battery lifetime – The change of the batteries is a child's play due to an easy closing mechanism in the handle
- Aspheric lightweight lens
- 3 AA alkaline batteries required (not included)



**155002** Pack of 3 AA alkaline batteries



**144292** Box ÖKOLUX plus high power lenses 4500 K

Content: 56 D, 48 D, 39 D, 28 D



**144092** Box ÖKOLUX plus 4500 K

Content: 20 D, 16 D, 12 D, 8 D

■ **ÖKOLUX plus**  
magnification heads

Easily interchangeable closed magnification head for different magnification powers.

■ **ÖKOLUX plus**  
magnifier handles

Easily interchangeable magnifier handle for different light temperatures.



**142002** Handle ÖKOLUX plus  
2700 K

**144002** Handle ÖKOLUX plus  
4500 K

**146002** Handle ÖKOLUX plus  
6000 K



**140292** Box ÖKOLUX plus high power lenses for testing  
Content: Heads 56 D, 48 D, 39 D, 28 D and handles  
2700 K, 4500 K, 6000 K



**140092** Box ÖKOLUX plus for testing  
Content: Heads 20 D, 16 D, 12 D, 8 D and handles  
2700 K, 4500 K, 6000 K



**140562** Head ÖKOLUX plus  
56 D / Ø 35 mm (opt. Ø 27,0 mm)



**140482** Head ÖKOLUX plus  
48 D / Ø 35 mm (opt. Ø 27,5 mm)



**140392** Head ÖKOLUX plus  
39 D / Ø 35 mm

**140282** Head ÖKOLUX plus  
28 D / Ø 35 mm



**140242** Head ÖKOLUX plus  
24 D / Ø 55 mm (opt. Ø 52,5 mm)



**140202** Head ÖKOLUX plus  
20 D / Ø 55 mm



**140162** Head ÖKOLUX plus  
16 D / Ø 60 mm



**140122** Head ÖKOLUX plus  
12 D / Ø 70 mm

**140082** Head ÖKOLUX plus  
8 D / 100 x 75 mm

Light temperatures: 2700 K 4500 K 6000 K



190222 190242 190262  
28 D / Ø 35 mm



191222 191242 191262  
20 D / Ø 55 mm



192222 192242 192262  
16 D / Ø 60 mm



193222 193242 193262  
12 D / Ø 70 mm



196222 196242 196262  
8 D / 100x75 mm



195222 195242 195262  
6 D / Ø 100 mm

# LED illuminated stand magnifiers

**NEW!**

## ■ MODULAR LED

Battery operated illuminated stand magnifier with three 4 chip SMD LEDs available in 3 light temperatures.

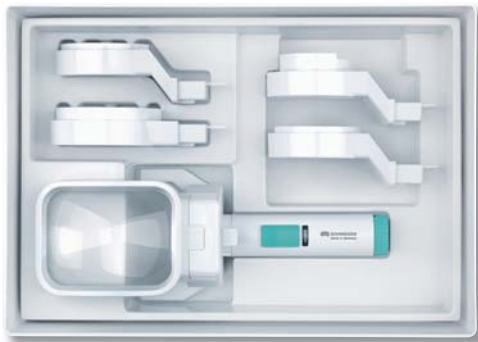
- Easily interchangeable open magnification heads available in different magnification powers
- Possibility to write under the low power lenses
- The choice of an individual preferred light temperature can reduce the magnification need
- Adjustable reading inclination for right-hand or left-hand use
- Very bright, consistent and high contrast light by the 3 precisely aligned special light emitting diodes
- Low energy consumption and long battery lifetime – The change of the batteries is a child's play due to an easy closing mechanism in the handle
- Aspheric lightweight lenses
- 3 AA alkaline batteries required (not included)





**198002** Box MODULAR LED 3 light temp. for testing

Content: Heads 16 D, 12D, 8D  
and basic units 2700 K, 4500 K, 6000 K



**198042** Box MODULAR LED 4500 K

Content: Heads 28 D, 20 D, 16 D, 12 D, 8 D and basic unit 4500 K

**155002** Pack of 3 AA alkaline batteries



**MODULAR basic unit**

**182222** **182242** **182262**

Easily interchangeable battery operated basic unit (handle incl. fixed tilting part) in different light temperatures. Tilting part inclinable in both directions for right-hand or left-hand use.



**190102** Head MODULAR  
28 D / Ø 35 mm



**191102** Head MODULAR  
20 D / Ø 55 mm



**192102** Head MODULAR  
16 D / Ø 60 mm



**193102** Head MODULAR  
12 D / Ø 70 mm



**196102** Head MODULAR  
8 D / 100x75 mm



**195102** Head MODULAR  
6 D / Ø 100 mm

# LED illuminated stand magnifiers



## ■ TWIN LUX LED

Illuminated stand magnifier with three 4 chip SMD LEDs available in 3 light temperatures with battery operation or mains operation (only 230 V / 50 Hz with Euro-plug).

- The world's largest field of view at a magnification power of 4,4x
- The choice of an individual preferred light temperature can reduce the magnification need
- Comfortable reading posture through ergonomically tilted style
- Very bright, consistent and high contrast light by the 3 precisely aligned special light emitting diodes
- Low energy consumption and long battery lifetime
- 2 aspheric lightweight lenses at an accurately computed distance
- 3 AA alkaline batteries required for battery operated version only (not included)

Light temperatures:

**2700 K**   **4500 K**   **6000 K**

### TWIN LUX LED

8 D / 100x75 mm + 6 D / 100x50 mm

**916222**   **916242**   **916262**

Battery operation

**916022**   **916042**   **916062**

Mains operation



**155002** Pack of 3 AA alkaline batteries

# Displays

**NEW!**

## ■ SlimLine

Floor stand display to promote sales of SCHWEIZER magnifiers. Appealing exhibition in a modern stainless steel look. Fits in every ambiance.

- Well-arranged and clear presentation of the products
- Easy to handle
- Attractive teaser
- Flexible positioning, moveable smoothly on 4 rolls
- Can hold up to 8 boxes (includes 4 box holders, additional box holders are available separately)
- Safe and economic shipping in 1 parcel



### 930007 Sample kit case

Total weight incl. all products less than 9 kg  
Case size approx. 58 x 48 x 21 cm  
Removable middle plate for ease of display at exhibitions  
Please contact us for details of content



### 500012 SlimLine

Display in silver colour incl. 4 box holders  
Size (W x H x D): ca. 50 x 182 x 60 cm  
Boxes and products not included

### 500022 Pack of 2 additional box holders for SlimLine



- 174312** Arcadian blue
  - 174322** Caribbean blue
  - 174332** Bordeaux red
  - 174342** Kerry green
- 24 D / Ø 55 mm (opt. Ø 52,5 mm)



- 175312** Arcadian blue
  - 175322** Caribbean blue
  - 175332** Bordeaux red
  - 175342** Kerry green
- 20 D / Ø 55 mm



- 176312** Arcadian blue
  - 176322** Caribbean blue
  - 176332** Bordeaux red
  - 176342** Kerry green
- 16 D / Ø 60 mm



- 177312** Arcadian blue
  - 177322** Caribbean blue
  - 177332** Bordeaux red
  - 177342** Kerry green
- 12 D / Ø 70 mm



- 178312** Arcadian blue
  - 178322** Caribbean blue
  - 178332** Bordeaux red
  - 178342** Kerry green
- 8 D / 100x75 mm

# Aspheric reading magnifiers

## ■ ERGO-Style

The reading magnifier in a revolutionary style.

- The ergonomic design supports the hand and the arm to ensure a natural and stress free position
- The correct distance between the object and the lens is found automatically when the handle end sits on the object
- Aspheric lightweight lens



### **179512** ERGO-Box with content

ERGO-Style: 24 D, 8 D Arcadian blue; 20 D Kerry green; 16 D Bordeaux red; 12 D Caribbean blue  
 ERGO-Lux: 24 D, 8 D Arcadian blue; 20 D Kerry green; 16 D Bordeaux red; 12 D Caribbean blue  
 ERGO-Base: For 24 D, 20 D, 16 D, 12 D, 8 D

### **179502** ERGO-Box display and storage (without content)



### Box ERGO-Style with all 5 magnification powers

- 179312** Arcadian blue
- 179322** Caribbean blue
- 179332** Bordeaux red
- 179342** Kerry green
- 179352** Random mix of colours
- 179912** Without content



## ■ SEMPRAL



The classic reading magnifier in an elegant design.

- Convenient integrated lanyard holder
- Aspheric lightweight lens



**214002** Box SEMPRAL

Content: 39 D, 28 D, 20 D, 16 D, 12 D, 8 D, 6 D

**180902** Pack of 5 lanyards



Suitable soft case

**119602** Suitable for SEMPRAL 39 D, 28 D

**119622** Suitable for SEMPRAL 20 D, 16 D

**119632** Suitable for SEMPRAL 12 D



**883902** 39 D / Ø 35 mm



**883502** 28 D / Ø 35 mm



**885502** 20 D / Ø 55 mm



**886002** 16 D / Ø 60 mm



**887002** 12 D / Ø 70 mm



**889002** 8 D / Ø 85 mm



**881502** 6 D / 100x50 mm

# Aspheric reading magnifiers

## ■ FUNCTIONAL

The economic reading magnifier with mount and handle made in one piece.

- Loop in the handle for a lanyard or a cord
- Aspheric lightweight lens



833902 39 D / Ø 35 mm



833502 28 D / Ø 35 mm



835502 20 D / Ø 55 mm



836002 16 D / Ø 60 mm



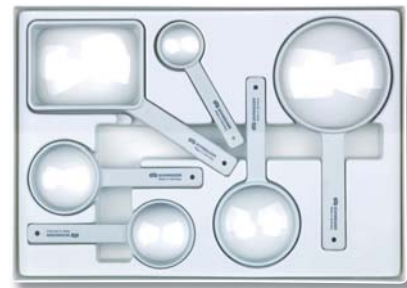
837002 12 D / Ø 70 mm



831002 6 D / Ø 100 mm



831702 8 D / 100x75 mm



210502 Box FUNCTIONAL

Content: 28 D, 20 D, 16 D, 12 D, 6 D, 8 D

180902 Pack of 5 lanyards



Suitable soft case

119602 Suitable for FUNCTIONAL 39 D, 28 D

119612 Suitable for FUNCTIONAL 20 D, 16 D

119632 Suitable for FUNCTIONAL 12 D

# Biconvex reading magnifiers

## ■ CLASSIC

Reading magnifier with matt black round plastic handle and premium chrome-plated brass mount.

- Biconvex glass lens

## ■ BIFOCUS

Reading magnifier with matt black round plastic handle and premium chrome-plated brass mount.

- Biconvex glass lens and additional lens (Bifo)



### 210202 Box CLASSIC, BIFOCUS

Content: CLASSIC 10 D, 2 x 6 D; BIFOCUS 2 x 4 D

## ■ ELEGANT

Reading magnifier with handle made from noble wood and premium chrome-plated brass mount.

- Biconvex glass lens



### Suitable leather case

119172 Black, suitable for CLASSIC 12 D, 10 D

119182 Black, suitable for CLASSIC 6 D; BIFOCUS 6 D

119192 Black, suitable for CLASSIC 4 D

119222 Black, suitable for BIFOCUS 4 D

119322 Brown, suitable for ELEGANT

### 119632 Suitable soft case

Suitable for CLASSIC 12 D, 10 D, 6 D, 4 D; BIFOCUS 6 D, 4 D; ELEGANT



### 556502 CLASSIC

12 D / Ø 65 mm

### 516002 CLASSIC

10 D / Ø 65 mm

### 517502 CLASSIC

6 D / Ø 75 mm

### 519002 CLASSIC

4 D / Ø 90 mm

### 537502 BIFOCUS

6 D / Ø 75 mm

Bifo: 16 D / Ø 20 mm

### 531502 BIFOCUS

4 D / 100x50 mm

Bifo: 12 D / Ø 30 mm

### 567502 ELEGANT

6 D / Ø 75 mm

# Stand and needlework magnifiers

## ■ BOY, SIR, BOSS

Stand magnifier with folding stand and folding handle.

- Mount and handle made from matt black plastic
- Folding stand made from metal with adjustable reading inclination
- Aspheric lightweight lens



**901002 BOY**

10 D / 75x50 mm



**902002 SIR**

6 D / 100x50 mm



**903002 BOSS**

8 D / 100x75 mm



**212002 Box BOY, SIR, BOSS, SEMPRAL**

Content: BOY + case; SIR + case; BOSS + case; SEMPRAL 12 D, 6 D



Suitable case

**119012** Suitable for BOY

**119022** Suitable for SIR

**119032** Suitable for BOSS

## ■ MODULAR TS



Stand magnifier with easily interchangeable open magnification heads available in different magnification powers.

- Reading inclination for right-hand or left-hand use
- Possibility to write under the low power lenses
- Aspheric lightweight lens



**183102 MODULAR TS basic unit**

Tilt stand without magnification head

## ■ Needlework magnifier

The ideal magnifier for needlework made from transparent acryl.

- Adjustable neck cord
- Biconvex lightweight lens with higher power insert to see details more clearly



**794002 Needlework magnifier**

4 D / Ø 110 mm with insert 14 D / Ø 30 mm



**183302 MODULAR TS**

**190102** Head only  
28 D / Ø 35 mm



**183402 MODULAR TS**

**191102** Head only  
20 D / Ø 55 mm



**183502 MODULAR TS**

**192102** Head only  
16 D / Ø 60 mm



**183602 MODULAR TS**

**193102** Head only  
12 D / Ø 70 mm



**183802 MODULAR TS**

**196102** Head only  
8 D / 100x75 mm



**183902 MODULAR TS**

**195102** Head only  
6 D / Ø 100 mm

# Pocket magnifiers

## ERGO-Pocket

The pocket magnifier in a revolutionary style.

- An intelligent folding mechanism enables a speedy opening of the magnifier with one movement of the hand
- Convenient integrated lanyard holder
- Aspheric lightweight lens

**180512** Arcadian blue

**180522** Caribbean blue

**180532** Bordeaux red

**180542** Kerry green

56 D / Ø 35 mm



**180412** Arcadian blue

**180422** Caribbean blue

**180432** Bordeaux red

**180442** Kerry green

48 D / Ø 35 mm



**180312** Arcadian blue

**180322** Caribbean blue

**180332** Bordeaux red

**180342** Kerry green

39 D / Ø 35 mm



**180212** Arcadian blue

**180222** Caribbean blue

**180232** Bordeaux red

**180242** Kerry green

28 D / Ø 35 mm



**180112** Arcadian blue

**180122** Caribbean blue

**180132** Bordeaux red

**180142** Kerry green

16 D / Ø 35 mm



**180612** Arcadian blue

**180622** Caribbean blue

**180632** Bordeaux red

**180642** Kerry green

12 D / Ø 35 mm



**180562** One each colour of 56 D / Ø 35 mm

4 pieces

**180482** One each colour of 48 D / Ø 35 mm

4 pieces

**180392** One each colour of 39 D / Ø 35 mm

4 pieces

**180282** One each colour of 28 D / Ø 35 mm

4 pieces

**180162** One each colour of 16 D / Ø 35 mm

4 pieces

**180662** One each colour of 12 D / Ø 35 mm

4 pieces



**180022** Box ERGO-Pocket all powers

Content: 56 D Bordeaux red, 48 D Arcadian blue, 39 D Arcadian blue and Kerry green, 28 D Caribbean blue and Bordeaux red, 16 D Caribbean blue and Bordeaux red, 12 D Arcadian blue and Kerry green, lanyard

**180012** Box ERGO-Pocket low powers

Content: 28 D Arcadian blue and Bordeaux red, 16 D in all 4 colours, 12 D in all 4 colours, lanyard

**180902** Pack of 5 lanyards



## ■ Folding magnifier

The classic pocket magnifier in an elegant design.

- Mount made from transparent plastic
- Housing made from strong grain leather
- Biconvex glass lens



**418342** Graphite black, 20 D / Ø 30 mm



**418312** Red, 20 D / Ø 30 mm



**418642** Graphite black, 10 D / Ø 60 mm



**418612** Red, 10 D / Ø 60 mm



### Visolett®

930642 1:1,8 / Ø 40 mm

930662 1:1,8 / Ø 65 mm

Circular magnifier with plastic rim

### 930602 Leather case

with zipper, black, for Ø 65 mm Visolett® magnifier



### 930652 Visolett®

Segment with inclination 1:1,8 / 25x65 mm



### Bright field magnifier

930672 1:1,8 / Ø 50 mm

930682 1:1,8 / Ø 65 mm

930692 1:1,8 / Ø 80 mm

930702 1:1,8 / Ø 95 mm



### Bright field magnifier with guiding line

930762 1:1,8 / Ø 50 mm

930772 1:1,8 / Ø 65 mm

930782 1:1,8 / Ø 80 mm

930792 1:1,8 / Ø 95 mm

### Reading bar

432142 2x, 140x20 mm / 165x20 mm

433202 1,5x, 200x25 mm / 250x32 mm  
Ruler (20 cm)

432202 1,5x, 200x35 mm / 220x35 mm  
Red guiding line

432332 1,5x, 330x35 mm / 350x35 mm  
Red guiding line



# Special magnifiers

## ■ Visolett® magnifiers



Bright field magnifier made from glass with white plastic rim.

■ Visolett® glass of DESAG

## ■ Bright field magnifiers



Bright field magnifier made from acryl glass.

■ Concave bottom side avoids scratches

■ Black cloth pouch included

### 930752 Box special magnifiers

Content: Visolett® magnifier Ø 40 mm, Ø 65 mm + case, segment 25x65 mm; bright field magnifier Ø 50 mm, Ø 65 mm, Ø 80 mm, Ø 95 mm; reading bar 140x20 mm, 200x35 mm



### 930812 Trial box bright field magnifiers

Content: Visolett® magnifier segment 25x65 mm; bright field magnifier Ø 50 mm, Ø 65 mm, Ø 80 mm, Ø 95 mm; bright field magnifier with guiding line Ø 50 mm



## ■ Reading bars

Reading bar made from clear optical plastic.

■ Integrated handle recess

■ Vertical magnification

### Velour leather case for reading bar

432152 Suitable for 140x20 mm

433212 Suitable for 200x25 mm

432212 Suitable for 200x35 mm

432342 Suitable for 330x35 mm





■ Working stand magnifier  
with glass lens

- Cast base coated with black plastic Ø 130 mm
- Flexible metal goose neck with 300 mm length
- Aplanatic optical system in chrome-plated metal mount



312652 10 D / Ø 65 mm, aplanatic optical system

■ Working stand magnifier  
with lightweight lens

- Cast base coated with black plastic Ø 130 mm
- Flexible metal goose neck with 300 mm length
- Aspheric lightweight lens in black plastic mount



314002 8 D / 100x75 mm, aspheric lightweight lens



13.01.21.2020  
EUR 14,96  
D: XL  
F: XXL  
UK: 20  
US: 16  
9999  
13.01.21.2020  
4 550014 442501

13.01.21.2020  
EUR 14,96  
13.01.21.2020  
4 550014 442501

Although visually impaired people can improve their vision with traditional optical aids, there are situations which require further solutions. The video magnifiers featured in the SCHWEIZER eMag series provide additional options of vision improvement for home and on the go.

# Video magnifiers

# 2

## Contents

Portable video magnifiers p. 28

Desktop video magnifiers p. 30

# Portable video magnifiers



Portable and powerful video reading magnifiers for home and on the go with useful and easy to operate technical features.

- A snapshot feature can capture images temporarily for comfortable reading
- The centrally located camera makes text orientation easy
- High contrast image by brilliant LED illumination of the object
- Operation whilst charging is possible
- Power adapter with cord included



## ■ eMag 34

- Can easily be held in the hand and is ideal on the go
- All functions are controlled by well noticeable coloured buttons
- The viewing options are full colour, black on white, white on black
- Wrist strap and protection pouch included



### 534002 eMag 34

Magnification: 2 to 14x in 2 steps  
Weight: 121 grams  
Screen size: 3,5 inch  
Rechargeable Li-ion battery  
Up to 2,5 hours operating time

## ■ eMag 43

- The folding handle creates the impression of a traditional magnifying glass. Can also be positioned directly on the reading material
- Easily accessible coloured function buttons ensure an intuitive operation
- The viewing options are full colour, black on white, white on black, yellow on blue, yellow on black
- Storage mode to save up to 15 images
- LED illumination can be switched off to avoid glare from reflective surfaces
- Automatic turn-off function is conserving the batteries and extending the operating time
- Wrist strap and carrying case with belt loop and with carrying strap included



### 543002 eMag 43

Magnification: 2 to 14x in 3 steps  
Weight: 218 grams  
Screen size: 4,3 inch  
4 rechargeable NiMH batteries  
Up to 2,0 hours operating time

## ■ eMag 70

- Lies flat on the reading material or the object is held above the camera
- Optimized bottom surface for easy sliding on reading materials
- Ideal for three-dimensional objects
- Easy to operate integrated writing stand gives space to work under the camera
- Easily accessible coloured function buttons and slide control for magnification
- Adjustable reading line and text mask
- The viewing options are full colour, black on white, white on black as well as 20 additional contrast modes
- Carrying case with carrying strap included. Furthermore a RCA video cable for connection to a TV is included



**570002 eMag 70**

Magnification: 3,4 to 16 x  
 Weight: 880 grams  
 Size: 203 x 137 x 46 mm (closed)  
 Screen size: 7,0 inch  
 Rechargeable Li-ion battery  
 Up to 4,0 hours operating time

**NEW!**



**510102 Box portable video magnifiers**

Content: eMag 34, eMag 43, eMag 70



**535042 eMag base**

Writing and reading stand suitable for eMag 43

# Desktop video magnifiers

**NEW!**

Desktop video magnifiers of the eMag series are functional, top-quality and comfortable. They are ideal for extended reading of printed or handwritten documents if the user needs a high magnification or suffers from reduced contrast sensitivity.

- The snapshot function can freeze the current image on the screen
- The camera automatically focuses on the closest object in view making the use of reading materials of different heights easy
- High contrast flicker-free image
- High resolution of the image
- By default the viewing options are full colour, black on white, white on black, yellow on blue, yellow on black
- The previous magnification and viewing mode settings are always saved
- TFT LCD monitor included



## **517002 eMag 170**

Magnification: 2,4 to 40 x

Weight: 15,4 kg

Total size: (W x H x D): 430 x 710 x 440 mm

XY table size: 437 x 381 mm

Screen size: 17 inch

## ■ eMag 170

17 inch desktop video magnifier in proven quality with comfortable image and resolution.

- Intuitive operation of the numerous functions such as the viewing options, the brightness and the position locator by function buttons in contrasting colours
- Consistent illumination of the object without glare by bright LEDs
- Stand monitor
- Moveable XY reading table with brake



## **510002 eMag Table**

Suitable for eMag 170, 200 and 240 HD, trapezium-shaped with lockable castors, height adjustable, size (W x D x H): 800 x 600 x 700–1000 mm

## ■ eMag 200

User-friendly 20 inch desktop video magnifier in optimized quality with outstanding flicker-free image and resolution. Intuitive operation by solid function dials in contrasting colours.

- Orientation aid zooms out and back in on a selected new area of a document (find function)
- The monitor can be raised, lowered and swivelled 180 degrees side to side for best ergonomics
- Reading line, position locator for writing and focus lock to switch off the auto-focus
- Perfect illumination of the reading table without glare by 4 powerful SMD LEDs
- Large XY reading table which can be braked or fully locked
- XY reading table with built-in holder to keep cans and bottles from rolling off the table
- The combination of a 16:9 camera and a TFT LCD monitor avoids distortion and thus improves the reading fluency
- 210 mm working distance between the camera and the XY reading table

## ■ eMag 240 HD

Comfortable 24 inch desktop video magnifier in optimized HD quality with highest image quality and peripheral sharpness.

Same features as eMag 200 plus the following:

- 24 inch TFT LCD monitor
- High contrast flicker-free and high resolution image in HD quality
- The lowest magnification of 1,9x and the various viewing options (contrast settings) are ideal for RP patients
- 30 different contrast settings
- Horizontal or vertical reading mask showing only a slice of the screen for better orientation and fatigue-free reading fluency



### 520002 eMag 200

Magnification: 2,3 to 60 x

Weight: 18,6 kg

Total size: (W x H min./max. x D):

565 x 480/630 x 439 mm

XY table size: 437 x 406 mm

Screen size: 20 inch



### 524002 eMag 240 HD

Magnification: 1,9 to 71 x

Weight: 19,8 kg

Total size: (W x H min./max. x D):

565 x 505/675 x 439 mm

XY table size: 437 x 406 mm

Screen size: 24 inch





The therapeutic service for visually impaired people starts with an optimization of the lighting according to the person's needs.

In multiple studies with visually impaired people Professor Hartmann from Munich/ Germany has diagnosed that a very good and appropriate lighting results in a considerably increased visual acuity. An individually tested light temperature is more comfortable and the reading is less stressful.

With an optimized lighting the otherwise needed magnification requirement can be reduced.

# Lamps

# 3

Contents

LowVision lamps

p. 34

Light temperatures: **2700 K** **4500 K** **6000 K**

# LowVision lamps



MULTILIGHT LED Stand

**937283** **937483** **937683**

## ■ MULTILIGHT LED Floor Stand

Floor base lamp with 72 durable and energy efficient SMD-LEDs.

- Switch integrated in the lamp head
- Lamp head can be positioned three-dimensional through goose neck
- Dimensions:  
Base to goose neck: 86 cm  
Goose neck: 43 cm  
Lamp head: 29 cm
- Fixed cord 170 cm with Euro-plug for power supply 100 – 240 V / 50 – 60 Hz

**NEW!**



MULTILIGHT LED Table

**936203** **936213** **936223**

### **936293** Table clamp

Solid table clamp with turnable base for MULTILIGHT LED Table, maximum width 60 mm

## ■ MULTILIGHT LED Table

Table lamp with 42 durable and energy efficient SMD-LEDs.

- Solid table base included, optional table clamp available
- Convenient sensor switch integrated in the lamp body
- Lamp head can be moved 180° horizontally and 45° vertically as well as axially
- Height of lamp head adjustable from 40 cm up to 60 cm
- Maximum horizontal deflection 70 cm
- Footprint: 18 x 24 cm  
Weight: 1700 g
- Inclusive transformer cable 150 cm with Euro-plug for power supply 100 – 240 V / 50 – 60 Hz
- The table base is supplied unmounted and can be mounted easily with one screw

## ■ MULTILIGHT LED Akku

Folding task lamp with 48 durable and energy efficient SMD-LEDs.

- Adjustable height due to extendable head
- The possible ideal positioning avoids glare and thus details can be seen more clearly
- Dimensions & Weight:  
Footprint: 9 x 13,5 cm  
Height (maximum): 35 cm  
Weight: 1600 g
- Rechargeable battery or mains operation, the rechargeable battery operation gives outstanding flexibility
- Inclusive transformer cable 190 cm with Euro-plug for power supply 100 – 240 V / 50 – 60 Hz



MULTILIGHT LED Akku

**937223** **937423** **937623**

## ■ MULTILIGHT LED Mobil

Compact folding task lamp with 30 durable and energy efficient SMD-LEDs.

- Switches on and off automatically as the head is opened and closed
- Lightweight and requires only little space
- Dimensions & Weight:  
Footprint: Ø 8,2 cm  
Height: 26 cm  
Weight: 250 g
- Battery or mains operation, for battery operation 3 AAA alkaline batteries are required
- Inclusive carrying case and transformer cable 150 cm with Euro-plug for power supply 100 - 240 V / 50 - 60 Hz



MULTILIGHT LED Mobil

**937243** **937443** **937643**

## ■ MULTILIGHT LED Pocket

Handy folding task lamp with 12 durable and energy efficient SMD-LEDs.

- Switches on and off automatically as the head is opened and closed
- Fits in every pocket, convenient built-in clip and integrated lanyard holder
- Dimensions & Weight:  
Size: 5,9 x 8,4 cm  
Weight: 70 g
- Battery operation (3 AAA alkaline batteries are required)



MULTILIGHT LED Pocket

**937263** **937463** **937663**

**180902** Pack of 5 lanyards

**156002** Pack of 3 AAA alkaline batteries



The main demands of visually impaired people – often elderly persons – are the reading of newspapers, bank statements, telephone directories, package inserts of drugs and watching television.

Consequently one essential target of providing visual aids is the maintenance or rather the restoration of the reading ability. This challenge often can also be resolved with telescopes which at the same time are also suitable for far and intermediate working distances such as for example watching television.

Telescopes with a magnification power between about 2x and 4x are mounted in a frame to create hands-free telescopic spectacles. For higher magnification needs hand-held monocular telescopes are used.

# Telescopes



## Contents

<u>Galilei telescopes</u>	p. 38
<u>Kepler telescopes</u>	p. 40
<u>Frame mounting of telescopes</u>	p. 42
<u>Monoculars</u>	p. 43

# Galilei telescopes



**937215** 2,1x  
Field of view 20,0°; 18 g



**937255** 2,5x  
Field of view 18,0°; 18 g



**937275** 2,7x  
Field of view 13,2°; 30,5 g



## Front caps

Basic	Add-on	
<b>938015</b>	<b>939015</b>	Empty housing (2 pieces)
<b>938005</b>	<b>939005</b>	matt
<b>938055</b>	<b>939055</b>	+0,50
<b>938065</b>	<b>939065</b>	+0,66
<b>938105</b>	<b>939105</b>	+1,00
<b>938155</b>	<b>939155</b>	+1,50
<b>938205</b>	<b>939205</b>	+2,00
<b>938305</b>	<b>939305</b>	+3,00
<b>938405</b>	<b>939405</b>	+4,00
<b>938505</b>	<b>939505</b>	+5,00
<b>938605</b>	<b>939605</b>	+6,00
<b>938805</b>	<b>939805</b>	+8,00

Small and lightweight fixed focus Galilei telescope with multi-coated lenses in an aluminium housing.

- Two groups of computer-optimised lenses
- Designed for mounting in a frame, lock ring included
- Ideal for SCHWEIZER telescope frames as shown on pages 42 – 44
- Set infinite focal distance; front caps for intermediate distances (e. g. TV) and for close distances (e. g. reading)
- Correction of refractive errors through a back correction lens with  $\varnothing$  22 mm, adjustment of the focal distance through inclusion in back correction lens or through Basic front cap.
- The adjustment of the focal distance through back correction can be calculated by multiplying the system magnification by itself and dividing the result by the needed focal distance in meters. This gives the D power to be included in the back correction of refractive errors.
- Binocular use for close working distances is possible with special mounting lenses

## ■ Front caps

Front caps for intermediate distances (e. g. TV) and for close distances (e. g. reading).

- Firm hold of the Basic front cap which snaps in the system audibly
- Additional availability of Add-on front caps which can be connected with Basic front caps for higher magnifications respectively additional working distances. The Add-on front caps fold up and down easily
- Numerous focal distances from 200 cm to 6,25 cm can be created
- The combination of a Basic front cap with an Add-on front cap create an aplanatic front cap up to + 16,00 D without spherical aberrations
- At set infinite focal distance of the system the working distance is calculated by dividing 1 by the total D power of the Basic + Add-on front cap. The resulting close distance magnification is the system magnification multiplied with one quarter of the total D power of the Basic + Add-on front cap

## ■ Binocular use

Mounting lens for binocular use with the according convergence.

- Mounting lens packed in pairs inclusive mounting adapters for the fitting of back correction lenses
- Mounting lens made from PMMA material (Plexiglas®)



**937116** Case for telescopic spectacles



**931067** Trial box Galilei

Content: 2 pieces each 2,1 x and 2,5 x in adapter for trial frame; Basic front caps 2 pieces each +0,50 D, +0,66 D, +1,00 D and 1 piece each +1,50 D, +2,00 D, +3,00 D, +4,00 D, +5,00 D, +6,00 D, +8,00 D; Add-on front caps 1 piece each +4,00 D, +8,00 D



**Mounting lens**  
inclusive adapter for back correction lens 15 mm

**933225** Binocular use for  
200 mm working distance, 2 pieces

**933255** Binocular use for  
250 mm working distance, 2 pieces

**933235** Binocular use for  
330 mm working distance, 2 pieces

**933265** Without convergence for  
reduced back vertex distance BVD, 2 pieces



**Convergence adapter for trial frame**

**933315** 200 mm; 5,0 D; 2 pieces

**933325** 250 mm; 4,0 D; 2 pieces

**933335** 330 mm; 3,0 D; 2 pieces

# Kepler telescopes



## 931935 Kepler 3x9

Magnification 3x, field of view 12,5°, objective Ø 9 mm, silver black metal housing



## 931945 Kepler 4x10

Magnification 4x, field of view 10,0°, objective Ø 10 mm, silver black metal housing



## 931955 Kepler 4x12

Magnification 4x, field of view 12,5°, objective Ø 12 mm, silver black metal housing

## 932165 Kepler 6x16

Magnification 6x, field of view 10,0°, objective Ø 16 mm, black metal housing

Small and lightweight focusable Kepler telescope.

- Multi-coated achromatic precision optics
- Focusable between infinity and about 250 mm
- Designed for mounting in a frame, 2 lock rings included
- Optional adapter to use the front caps of SCHWEIZER Galilei telescopes for close working distances
- Ideal for SCHWEIZER telescope frames as shown on pages 42 – 44



## 931077 Trial box Kepler

Content: 1 piece each 3 x 9, 4 x 10 and 4 x 12 in adapter for trial frame; 1 piece each focus stop ring suitable for 3 x 9, 4 x 10 and 4 x 12; 1 adapter for Basic front caps; 1 empty space for monocular 6 x 16 inclusive finger ring (not included)



## ■ Application tip

SCHWEIZER Kepler telescopes can be focused for the needed working or reading distance. Furthermore they offer the following application possibilities:

### ■ Application with focus stop ring

For a particular application of the telescope such as watching television the eye care professional brings the telescope into focus and fastens the focus stop ring on the housing to act as a stopper.

For closer working distances the visually impaired person can still screw out the objective to bring the telescope into focus. By turning back the objective up to the stopper the telescope easily is focused again for the original application such as watching television.

### ■ Application with fixed focus

For this purpose the telescope is brought into focus for a particular application such as watching television and the eye care professional locks this focal distance with the screws in the housing. For close working distances the front caps of SCHWEIZER Galilei telescopes can be used with an adapter.

Elderly visually impaired people often prefer a fixed focal distance due to some motor dysfunctions.



Focus stop ring

**932525** Suitable for 3x9

**932555** Suitable for 4x10

**932505** Suitable for 4x12



**938025** Adapter for Basic front caps

Suitable for 3x9, 4x10

**937116** Case for telescopic spectacles





**936097** Box of mounting parts



**932545** Adapter Galilei for trial frame

Pack of 2 pieces



**932575** Adapter Kepler for trial frame

Pack of 2 pieces



**936087** Lock ring mounting tool

# Frame mounting of telescopes

## ■ Box of mounting parts

This box contains all mounting parts which are needed to mount a telescope in a frame: Adapters for trial frame, lock ring mounting tool, mounting lens with and without mounting slot made from CR39 (3 pieces each), set of washers, adapters for back correction lens, spare lock rings, centring test lamp, titanium telescope frame of your choice.

## ■ Individual mounting parts

**932765** Mounting lens with mounting slot

3 mm thickness, CR39, Ø 80 mm, pack of 2 pieces

**932865** Mounting lens without mounting slot

3 mm thickness, CR39, Ø 80 mm, pack of 2 pieces

**932715** Washer 0,5 mm thickness

Pack of 6 pieces

**932725** Washer 1,0 mm thickness

Pack of 6 pieces

**932735** Washer 2,0 mm thickness

Pack of 6 pieces

**932745** Set of washers

6 pieces each of 0,5 mm, 1,0 mm and 2,0 mm thickness

**932755** Adapter for back correction lens (Ø 22 mm)

Pack of 6 pieces

**932785** Spare lock ring made from aluminium

Pack of 2 pieces

**936305** Centring test lamp



# Monoculars



Hand-held Kepler telescope.

- Multi-coated achromatic precision optics
- Eversible eye cup to correct the back vertex distance BVD for spectacle wearers
- Ideal for the maintenance of individual mobility (seeing bus numbers, street signs; reading time tables, price tags; etc.)
- Small and handy
- Focusable between infinity and about 250 mm
- Soft case and neck cord included
- Use as a hand microscope with the acrylic stand, which can also be used separately as a 3x stand magnifier



Transparent acrylic stand

**933205** Suitable for 6x16, 8x20, 10x20

**933285** Suitable for 8x30, 10x30



Finger ring

**933775** Suitable for 4x12, small

**933215** Suitable for 6x16, 8x20, large with short eye cup



**931965** Monocular 4x12

Magnification 4x,  
field of view 12,5°, objective Ø 12 mm,  
silver black metal housing



**931975** Monocular 6x16

Magnification 6x, with acrylic stand 20x,  
field of view 10,0°, objective Ø 16 mm,  
silver black metal housing



**931985** Monocular 8x20

Magnification 8x, with acrylic stand 25x,  
field of view 7,0°, objective Ø 20 mm,  
silver black metal housing

**931995** Monocular 8x30

Magnification 8x, with acrylic stand 25x,  
field of view 8,5°, objective Ø 30 mm,  
black metal housing

**933025** Monocular 10x20

Magnification 10x, with acrylic stand 30x,  
field of view 6,0°, objective Ø 20 mm,  
black metal housing

**933035** Monocular 10x30

Magnification 10x, with acrylic stand 30x,  
field of view 6,0°, objective Ø 30 mm,  
black metal housing



Product solutions for improved vision also include aids which are instrumental or essential for the use of other devices. Amongst them are various special spectacle frames such as telescope frames.

In addition there are available protective spectacles and daily living aids to improve the quality of life of visually impaired people further.

# Aids

# 5

## Contents

<u>Telescope frames</u>	p. 46
<u>Protective spectacles</u>	p. 49
<u>Reading stands</u>	p. 50
<u>Binocular clip-on magnifier</u>	p. 51

# Telescope frames

Only special telescope frames designed for a perfect anatomic fit ensure the ideal function and efficient use of telescopic spectacles.



**935736** Ice blue colour, matt  
Size 47-18-145

**935716** Ice blue colour, matt  
Size 50-18-145

**935726** Ice blue colour, matt  
Size 53-18-145



**935766** Gold colour, matt  
Size 47-18-145

**935746** Gold colour, matt  
Size 50-18-145

**935756** Gold colour, matt  
Size 53-18-145



**935796** Bordeaux red colour, matt  
Size 47-18-145

**935776** Bordeaux red colour, matt  
Size 50-18-145

**935786** Bordeaux red colour, matt  
Size 53-18-145



**935826** Titanium grey colour, matt  
Size 47-18-145

**935806** Titanium grey colour, matt  
Size 50-18-145

**935816** Titanium grey colour, matt  
Size 53-18-145

## ■ Titanium telescope frames with variable saddle bridge system

- Material: 100% titanium, welded, hypoallergenic, solder-free, screws and saddle bridge insert made from stainless steel
- Weight: 16 g
- Temple: Golf temple 145 mm, easy to shorten, silicone-coated plastic temple ends, common sport temple ends mountable
- Adjustable saddle bridge, flat saddle bridge for reduced back vertex distance BVD included
- Meets the technical and medical requirements for listed aids of the compulsory health insurance in Germany
- Unisex: Style and colouring equally suit ladies, gentlemen and adolescents

### Please note:

In most cases a large back vertex distance BVD is necessary for telescopic spectacles. The SCHWEIZER telescope frames are designed accordingly. However, if needed the back vertex distance BVD of the titanium telescope frames with variable saddle bridge system can be reduced by 3 mm. For this purpose an included **flat saddle bridge** can be mounted. This is a fast and easy way to react to different optical and anatomic conditions.

## ■ Titanium telescope frames

- Material: 100% titanium, welded, hypoallergenic, solder-free, screws and saddle bridge insert made from stainless steel
- Weight: Female model 16 g and 17 g, male model 17 g and 18 g
- Temple: Golf temple 145 mm, easy to shorten, silicone-coated plastic temple ends, common sport temple ends mountable
- Adjustable saddle bridge
- Ideal for curved mounting lenses
- Meets the technical and medical requirements for listed aids of the compulsory health insurance in Germany
- Stylish female and male model



### Female model

**935566** Titanium grey colour, matt  
Size 48-19-145

**935576** Titanium grey colour, matt  
Size 51-19-145

**935546** Lilac rosy colour, matt  
Size 48-19-145

**935556** Lilac rosy colour, matt  
Size 51-19-145

**935526** Copper red colour, matt  
Size 48-19-145

**935536** Copper red colour, matt  
Size 51-19-145



### Male model

**935626** Titanium grey colour, pearlescent  
Size 50-19-145

**935636** Titanium grey colour, pearlescent  
Size 53-19-145

**935646** Night blue colour, matt  
Size 50-19-145

**935656** Night blue colour, matt  
Size 53-19-145

**935666** Colonial brown colour, matt  
Size 50-19-145

**935676** Colonial brown colour, matt  
Size 53-19-145





Proven  
**LOW VISION**  
Product

## ■ Standard telescope frames

- Material: Skin friendly special alloy, screws and saddle bridge insert made from stainless steel
- Curl temple 155 mm or 165 mm with silicone sleeve, optional Golf temple 155 mm or 165 mm
- Adjustable saddle bridge 17 mm, optional 19 mm
- The lens shape is suitable for telescopes which require a very large mounting diameter

### Please note:

Requirements for listed telescopic frames of the compulsory health insurance in Germany:

- Frame made from metal with strong rigid bridge, stable and torsion-free
- Comply with Medical Device Directive 93/42/EEC
- Adjustable temple ends
- Silicone contact surface of the saddle bridge and the temple ends

**937246** Silver colour, matt  
Size 48-18-155

**937316** Silver colour, matt  
Size 51-18-155

**937326** Silver colour, matt  
Size 54-18-165



**937256** Gold colour, matt  
Size 48-18-155

**937416** Gold colour, matt  
Size 51-18-155

**937426** Gold colour, matt  
Size 54-18-165



**937266** Bronze colour, matt  
Size 48-18-155

**937616** Bronze colour, matt  
Size 51-18-155

**937626** Bronze colour, matt  
Size 54-18-165



**937116** Case for telescopic spectacles



**936076** Trial box telescope frames

Content: 6 telescope frame of your choice



# Protective spectacles



## ■ Protective spectacles

Ideal for photo-allergies and for sufferers of high pollen levels as well as for safety at work for multiple applications.

- Strong frame made from solid acetate
- The anatomically designed protection avoids glare from the bottom, from the sides and especially from the top
- Perfect UV protection of the whole eye area
- In addition a matt surface reduces light reflexions on the frame edges
- Individual prescription lenses can be mounted
- Delivered with mounted UV and sun protection lenses 75%

## ■ Protective spectacles with comfort filters



Perfect protection of the eye against aggressive UV light whilst discomforting parts of the light are also cut off for increased sharpness and contrast.

- Irritating visible blue light is blocked
- The other parts of the light spectrum still reach the eye
- Natural colour vision which is especially important for people suffering from AMD



937126 Case for protective spectacles



Protective spectacles in brown colour

937716 Gr. 48-17

937556 Gr. 50-17

937576 Gr. 52-17



Protective spectacles in black colour

937726 Gr. 48-17

937566 Gr. 50-17

Size S	Size M	Size L
48 - 17	50 - 17	52 - 17

Size S	Size M	Size L	
931484	931504	931524	Brown
931494	931514		Black

Comfort soft



Size S	Size M	Size L	
932484	932504	932524	Brown
932494	932514		Black

Comfort soft POL



Size S	Size M	Size L	
933484	933504	933524	Brown
933494	933514		Black

Comfort soft gradient



Size S	Size M	Size L	
934484	934504	934524	Brown
934494	934514		Black

Comfort



Size S	Size M	Size L	
935484	935504	935524	Brown
935494	935514		Black

Comfort POL



Size S	Size M	Size L	
936484	936504	936524	Brown
936494	936514		Black

Comfort gradient



Light temperatures:

2700 K

4500 K

6500 K



MULTILIGHT LED reading stand

937297

937497

937697

156002

Pack of 3 AAA alkaline batteries



937206

Standard reading stand



937236

Economic reading stand

# Reading stands

## ■ MULTILIGHT LED reading stand

- Small footprint but large surface of 28 x 21 cm extendable up to 38 x 33 cm
- No slipping on the table
- Inclination adjustable in multiple steps
- Black plastic
- Illumination by 20 durable and energy efficient SMD LEDs
- Battery or mains operation, for battery operation 3 AAA alkaline batteries are required
- Inclusive transformer cable 150 cm with Euro-plug for power supply 100 – 240 V / 50 – 60 Hz

## ■ Standard reading stand

- Large surface with a size of 40 x 50 cm
- No slipping on the table
- Inclination adjustable in multiple steps
- Natural wood

## ■ Economic reading stand

- Surface with a size of 32 x 28 cm and a fixed inclination of 23°
- White plastic
- Pack of 2 pieces

# Binocular clip-on magnifier

## ■ RIDO-Clip

- 2 joined lenses with convergence supporting prisms
- Clipped on the spectacles of the user
- 3 different magnification powers
- Hard coating
- Solid case included

In comparison with standard magnifiers this clip-on magnifier has some advantages:

- Lightweight
- Wide field of view
- Convergence supporting prisms
- Easy handling, simply clipped on the spectacles
- Both hands remain free for working



### 934001 RIDO-Clip set with all lens parts

Content: Clip and one lens part each 3,0 D, 5,5 D, 7,0 D



### RIDO-Clip inclusive lens part

934021	3,0 D for working distance 250 mm
934011	5,5 D for working distance 180 mm
934031	7,0 D for working distance 125 mm



# Do you have questions ...

... about our products or do you need further information?

Please give us a call, we have the right specialists for you!

Phone

+49 - 9191 - 72 10 56

Fax

+49 - 9191 - 72 10 73

E-Mail

[info@improvision-lvs.com](mailto:info@improvision-lvs.com)

Internet

[www.improvision-lvs.com](http://www.improvision-lvs.com)

12-029/101138