

icare

tonometer

IOP MEASURING EXCELLENCE



REVOLUTIONARY, EASY ROUTINE

The easy-to-use Icare® tonometers revolutionize effective, early glaucoma detection and control by making the IOP measuring routine quick, effortless and effective.

SAFE, PAINLESS AND HYGIENIC PROCEDURE

No anesthetic or disinfection is needed with the Icare® tonometer. As a result, the patient flow can be kept dynamic even with massive screening programs.

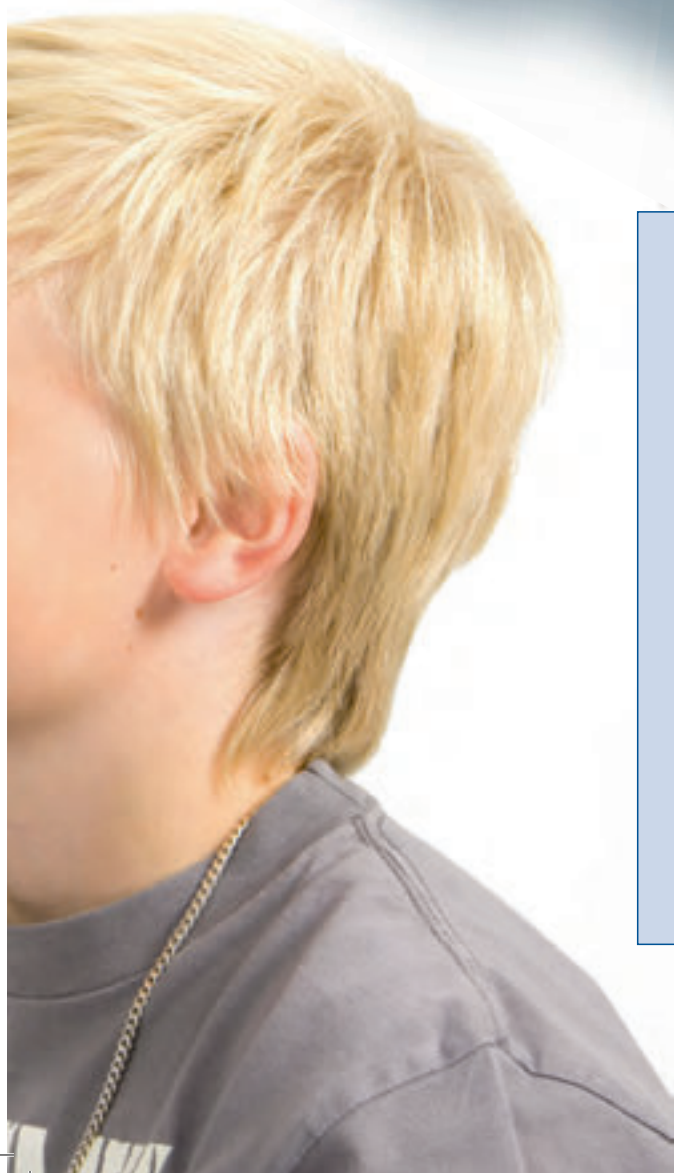
SUITABLE FOR ANY KIND OF PATIENT

The Icare® tonometer's disposable probe touches the cornea very lightly for only a fraction of a second. The measurement is barely noticeable by the patient and therefore suitable even for non-compliant subjects, such as children and dementia patients.

WORLD WIDE CLEARANCES AND PATENTS

Icare® has world wide clearances and satisfied users in over 50 countries. Clinical studies* show that the data obtained by Icare® is fully comparable to measuring results obtained with the GAT. Our devices have several unique patented features only available with Icare® Tonometers.





STUDY REFERENCES*

"The Icare Instrument was easy to use and was able to obtain rapid and consistent readings with minimal training. It was tolerated well by patients with no use of topical anesthetic."

J Glaucoma 2008 Jan/Feb

"Measurement of intraocular pressure (IOP) with the rebound tonometer (RBT) is a highly reproducible method in schoolchildren showing high intraobserver and interobserver correlation and it seems to be very comfortable when performing IOP measurements in schoolchildren without an anesthetic."

J Glaucoma 2007 March

"The Icare is easy to handle and high reliability. The data are comparable with those from the GAT."

Ophthalmologie 2007 April

ICARE FINLAND

is the original developer of rebound technology in tonometers. Our patented technology (over 20 patents/patent applications) combined with ISO 13485 certified quality system has made us a respected player in our field of expertise. Our products are based on ISO 8612 standard of tonometer and clinical trials have been processed according to its requirements. Today the light weight, hand held, portable Icare[®] tonometers are approved and recommended by professionals all over the world. The group of ten thousands satisfied users keeps on growing rapidly.

THE ADVANCED ICARE[®] PRODUCT LINE

offers reliable, high precision, reproducible accuracy in measuring intraocular pressure in any circumstances, in both experienced and inexperienced hands.

Variations of Icare[®] tonometers are available for several use:

- human tonometry for self-measuring, screening and diagnosis
- veterinary use, e.g. pets and racehorses
- laboratory use for research

ICARE[®] TONOMETER

TECHNICAL INFORMATION



Type: TAO1i.

The device conforms to CE regulations.

Dimensions:

13 - 32 mm (W) * 45 - 80 mm (H) * 230 mm (L).

Weight:

155 g (without batteries), 250 g (4 x AA batteries).

Power supply: 4 x AA batteries.

Measurement range: 7-50 mmHg.

Display range: 0-99 mmHg

(IOP estimation beyond the measuring range).

Accuracy

(95% tolerance interval relative to manometry):

± 1.2 mmHg (≤ 20 mmHg)

Repeatability (coefficient of variation): <8%.

Accuracy of display: 1.

Display unit: Millimeter mercury (mmHg).

There are no electrical connections from the tonometer to the patient.

The device has B-type electric shock protection.

Storage/transportation environment:

Temperature +5 to +40 °C.

Rel. humidity 10 to 80% (without condensation).



FDA cleared

icare
FINLAND

measuring
excellence

www.icaretonometer.com